

# Introduction to ISS and SAMI



Hosted by IPB University,  
Co-organized by Tokyo University of Agriculture

# Programs at IPB University

IPB University a.k.a. Bogor Agricultural University, Indonesia offers the following two international education programs in the fall to educate next generation leaders based on the comprehensive combination of practical learning, cultural immersion, and leadership experience. Upon successful completion of each program, students will be awarded 2 credits for ISS and 3 credits if they participate in both ISS and SAMI. **As these are undergraduate-level credits, both programs are recommendable for undergraduate students.**

International Students  
Summit (ISS)  
Sept. 6<sup>th</sup> ~ Sept. 13<sup>th</sup>

2 credits (IPB 200)

Sustainable Agri-food  
Management in Indonesia (SAMI)  
Sept. 14<sup>th</sup> ~ Sept. 20<sup>th</sup>

SAMI only: 2 credits (IPB 200)  
SAMI + ISS: 3 credits (IPB 300)

# What is International Students Summit (ISS)?

Tokyo University of Agriculture (Tokyo NODAI) has been hosting the ISS since 2001 to provide an opportunity for students from around the world to gather and exchange views and ideas on food, agricultural, and environmental issues in the world, and to discuss the role to be played by youth for the sustainable livelihood of mankind. This year, the ISS will be held at a partner university of Tokyo NODAI, **IPB University a.k.a Bogor Agricultural University, Indonesia.**



# ISS Theme for 2020:

*Linking Actions, Research and Education in Agricultural Value Chains to Achieve Environmental, Social and Economic Sustainability*



# Who are the presenters?

- Students representing their respective universities by presenting (oral and poster) their current research, project, or other initiatives **related to the ISS theme of that year** to have meaningful discussions with other students and scholars from around the world.
- One student (1<sup>st</sup> representative) will be carefully selected by each university as a candidate for oral presentation. If a partner university requests to send another student (2<sup>nd</sup> representative) and gets an approval from IPB, the second student may apply for poster presentation.

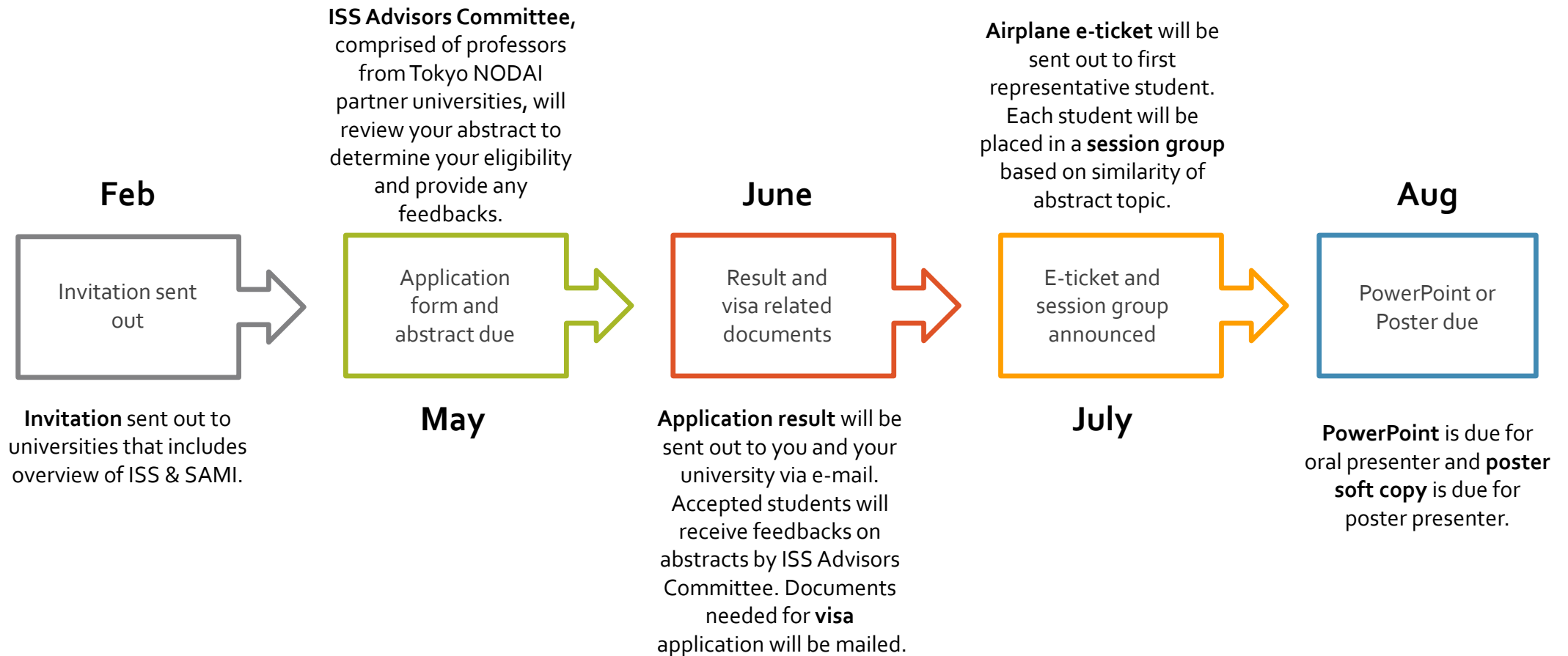


(Oral Presenter)

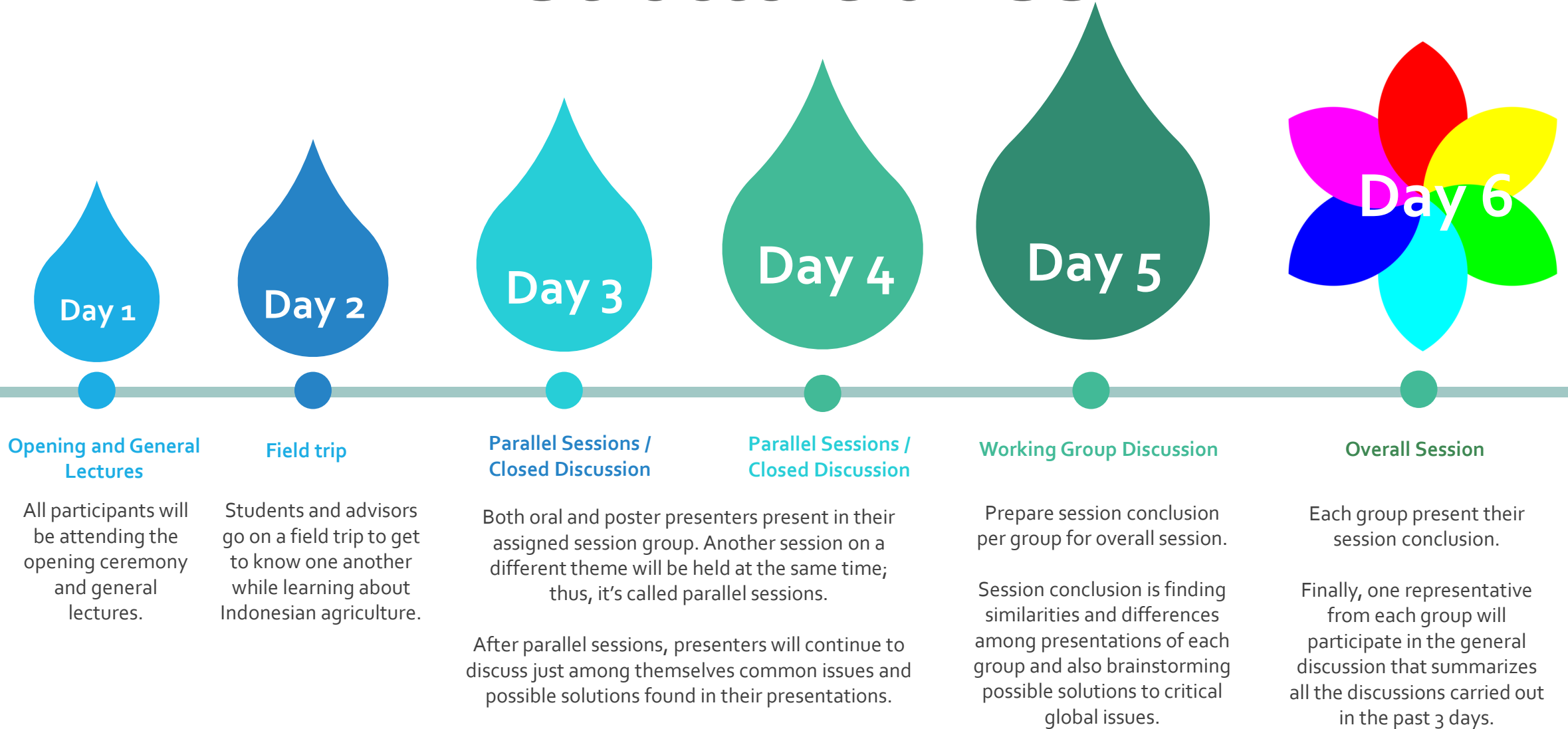


(Poster Presenter)

# Timeline until ISS



# Structure of ISS



# ISS Tentative Schedule

Date	Agenda
SUN, 6 Sept.	Arrival & get together dinner of ISS participants
MON, 7 Sept.	Opening & General Lectures
TUE, 8 Sept.	Field trip
WED, 9 Sept.	Small Working Group Discussion (parallel session)
THU, 10 Sept.	
FRI, 11 Sept.	Working Group Discussion
SAT, 12 Sept.	Overall Session Farewell Dinner
SUN, 13 Sept.	Student Exchange Day
MON, 14 Sept.	Departure of ISS participants



# What is Sustainable Agri-food Management in Indonesia (SAMI)?

SAMI is summer course which designed as 6 days sustainable agrifood management course with input from IPB University a.k.a Bogor Agricultural University experts in collaboration with international universities and multinational food companies. Relevant issues in the field of sustainable agrifood management will be presented and discussed in the plenary presentations. Furthermore, it gives participants the opportunity to practice teamwork in a sustainable agrifood management context and the students will be awarded **2 credits**.



# Who can participate?

- ❑ Student of Tokyo NODAI, partner universities and ISS-participating universities
- ❑ Undergraduate Student
- ❑ Prerequisite : Basic course(s) in agriculture, food, and environment
- ❑ Language : English proficiency
- ❑ Total capacity is approximately 15 students
- ❑ Student participating in ISS will be given priority in case of full registration



# SAMI Tentative Schedule

Date	Agenda
Mon, Sept. 14 <sup>th</sup>	➤ Opening Ceremony SAMI ➤ Lecture Session
Tue, Sept. 15 <sup>th</sup>	Lecture Session
Wed, Sept. 16 <sup>th</sup>	Lecture Session
Thu, Sept. 17 <sup>th</sup>	Field trip
Fri, Sept. 18 <sup>th</sup>	Field trip
Sat, Sept. 19 <sup>th</sup>	Participant' s Final Presentation
Sun, Sept. 20 <sup>th</sup>	Free Day

# WE ARE LOOKING FORWARD TO RECEIVING YOUR APPLICATION!

---



Should you have any questions, please email  
([isf@nodai.ac.jp](mailto:isf@nodai.ac.jp) AND [iss2020ipb@apps.ipb.ac.id](mailto:iss2020ipb@apps.ipb.ac.id))

IPB University

Tokyo University of Agriculture